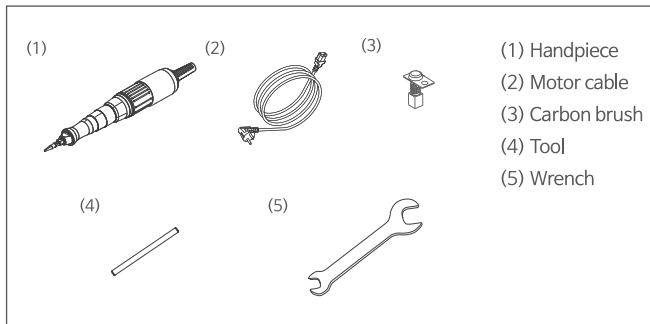


• Please be sure to read this manual before operation.

⚠ Attention

- Install the unit at the working place and do not use it in a dirty or very hot and humid place. (-20°C ~ 40°C, 0 ~ 90% RH)
- Please be careful not to drop the handpiece. It will damage ball bearing or weaken durability of motor.
- Please do not allow water or other liquids to spill onto and into the handpiece.
- After replacing a bur, Please make sure to close the chuck handle.
- Do not to open the chuck handle, while the handpiece is operating.
- While the handpiece is not in operation, it is recommended to keep the bur into the collet chuck after cleaning up.
- It's only used for by specialists who is trained of electric micro-motor.

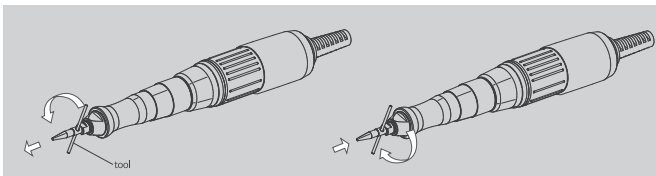
1. Components



2. Installation & Operation

2-1 Installation

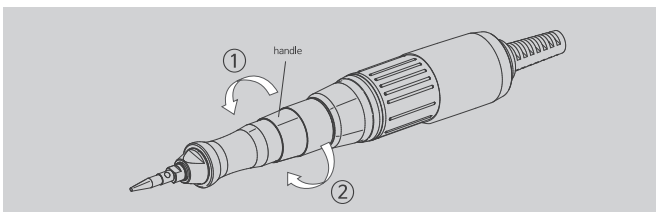
- 1) To remove or place the bur, insert the tool to the hole which is in the middle of the bur and spin it. counter-clockwise to remove, clockwise to insert the bur.



- 2) Motor cord plug is required to be well connected into the motor cord connector on the control box
- 3) Connect the power cable and footswitch according to the instructions for the controller.

2-2 Operation

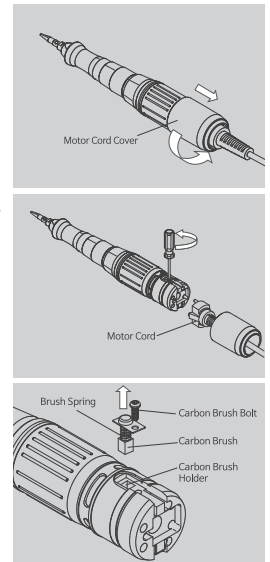
- 1) Follow the instructions for the controller to control the handpiece.
- 2) If you turn the handle by ① direction, the movement of the bur will increase but also same time the strength will be weaken.
- 3) If you turn the handle by ② directions, the movement of the bur will decrease but the strength will be stronger.



3. Replacing carbon brushes

- 1) After disconnect a motor cable to a control box, remove a carbon cover of motor cord from the motor.
- 2) Take off carbon brush bolts, by a screwdriver (+) and then remove worn-out carbon brushes.
- 3) Replace new carbon brushes carefully, a brush spring should get jammed in a carbon brush holder.
- 4) Assemble the handpiece.
- 5) After replacing the carbon brush, please run the handpiece for 30 minutes at a half speed of the maximum speed, and then use.

* Replacement cycle of carbon brushes will depend on working hours and loading.



4. Specification

Input (V)	RPM (Stroke)	Weight (g)	Dimension	
			∅	L
30V	10,000	282	30	120

※ Specifications excluding motor cable

5. Warranty

5-1 Period validity

- We offer 1 years free repair.

5-2 Range of warranty

- We are responsible for any trouble caused by quality, technique or structure problems within the warranty period.

5-3 The following are beyond our warranty

- The damage caused by disobeying the operation instruction or lack of the needed condition.
- The damage caused by unsuitable operation or disassembling without authorization.
- The damage caused by unadvisable transportation or preservation.

saeyang

Head Office | (Galsan-dong), 348, Seongseo-ro, Dalseo-gu, Daegu, 42697, Korea
 TEL +82-53-582-9000 FAX +82-53-581-9003

Website | www.saeyang.com

E-mail | marathon@saeyang.com

2016-SM110-EN-01

Dec. 2016
 Rev. 1-E